

APRIL 2020

Council Newsletter

SHIRE OF WYALKATCHEM

COVID-19 Community Update

The following information within this newsletter is the most current and up-to-date information the Shire of Wyalkatchem has received.

Updates are coming almost hourly from the Government and we are trying to keep our locals as in the know as possible.



IN THIS ISSUE...

- Update - Shire President
- Community Update
- Council Facilities
- Workforce
- Services
- Meetings
- Keep Yourself Updated
- Neighbour to Neighbour
- WBN Resources
- Lotterywest Relief Fund
- Burning Period Reinstated
- Public Notice - Planning
- Public Notice - DAIP
- Councillor Contacts

Council's Vision

That Wyalkatchem is an inclusive, dynamic community where all share in a thriving economy and a sustainable, safe and valued environment

Our Purpose

The Council of Wyalkatchem works with the community to protect and enhance the quality of life for current and future generations.

Update from the Shire President

The situation with the Coronavirus (COVID-19) is changing daily. The Government and the Health Authorities are giving strong directions to everyone to help slow the spread of this virus.

Who is at risk?

- Everyone! COVID-19 is very contagious.
- COVID-19 can affect people of all ages, all immunities and all attitudes. Nobody is exempt.
- People over the age of 60, those with compromised immune systems or those with pre-existing medical conditions are more vulnerable and have a higher chance of death if they contract the virus. This virus has been fatal for many people around the world.
- Infected people of all ages can be spreading the virus before even showing symptoms or knowing they are infected.
- There is no vaccine yet, so we need to slow the spread of this virus. We need to slow the rate at which this virus is spreading so our hospitals and healthcare workers have the capacity to care for anyone who may contract the virus and requires medical care (or requires medical care for something unrelated to the virus).

What should YOU do?

Please read and follow these directions that have been given by our Government. WYALKATCHEM is **not** excused from these directions, and it is very simple:

STAY AT HOME AS MUCH AS POSSIBLE

- Avoid gatherings, maximum of two people (unless from the same house).
- Do not visit grandparents/grandchildren.

ALWAYS PRACTICE SOCIAL DISTANCING

- If you have to leave your home, then always ensure you stay 1.5m away from any other person.

HYGIENE

- Wash your hands using soap and water, often and properly (20 seconds).
- Cough or sneeze into your elbow or a tissue (dispose of tissue and wash your hands).
- Wipe down surfaces in your home and car that are touched regularly like benches, door handles, light switches, keys and phones.
- Stay home if you are sick. Do not go to work, school or the shops. If you display symptoms of COVID-19, phone the hospital or medical centre before visiting.

LIMIT TRAVEL

- Only leave home for things that are urgent or essential. Western Australians are not permitted to leave their regional boundary. Police have the power to enforce these restrictions and fines of up to \$50,000 can be issued.
- Use our local suppliers and arrange for home delivery if possible or call to have your orders pre-packed for pick up. Use EFTPOS and not cash. Travel out of town increases the risk to you and all of our residents. Please don't put us at risk.

Continued...

Wyalkatchem residents, as your Shire President, with the support of of your Councillors and Staff, I am trying to be on the front foot and prevent this virus getting into our community. COVID-19 **absolutely is** that serious, and no one should be taking this situation lightly. The above measures are not that much to ask, especially if it may help save your life, or someone else's. If you assume that everyone already has this virus, you will then apply the above practices and do your part in stopping the spread of this pandemic.

It is up to every single one of us to help slow the spread of this virus and protect each other.

Quentin Davies
SHIRE PRESIDENT



stop the spread!



Community Update - as at 31/03/2020

The Government of Western Australia has declared a State of Emergency and a Public Health Emergency in response to the COVID-19 outbreak.

There are now directions under the Public Health Act and the Emergency Management Act on various topics e.g. business closures, mass gatherings and self-isolation. The Shire continues to be updated daily by relevant Government agencies and is making decisions for the safety, health and well-being of our community, customers and employees based on the recommendations and/or directions.

We have stepped up our preparedness and have put in control measures designed to reduce the speed of the virus, including increasing our cleaning regime of public facilities and infrastructure.

Council Facilities

As of 30 March 2020, Council has closed the following facilities:

- Shire Office
- Town and Korrelocking Halls and ablutions
- Playgrounds
- Recreation Centre and ablutions
- Terminal Building
- Swimming Pool
- Drinking fountains
- Barbecues
- Public Toilets



Continued...

The Shire Office is closed to public access unless an appointment has been made. Please contact the Shire Office if you wish to make an appointment by phone [96811166](tel:96811166) or by email general@wyalkatchem.wa.gov.au. Do not come to the office if you don't have an appointment, are unwell, or showing any symptoms of being unwell. All approved visitors will be required to adhere to social distancing and maintain good hygiene measures. Many Shire enquiries and payments can be made by phone or online, and we ask that you use these options wherever possible.

Workforce

help us, help you

The Shire has taken preventative measures within its workforce; including staggered workforce and working from home. Your patience during this time, as we work through implementing our processes, would be greatly appreciated.

Where possible, outside staff are continuing with planned works and maintenance. Staff are practicing social distancing and we would ask that you respect these practices and refrain from approaching them directly.

This is all essential services, and all that we ask is that you avoid interaction with our staff, and help stop the spread of COVID-19



Services

Waste collection services are currently operating as normal. Avon Waste has continuity plans in place to limit disruptions to these services.

The Shire of Wyalkatchem is currently developing our own continuity plans, to ensure that we can continue to provide critical services to our residents.

Meetings

Councillors are meeting regularly via teleconference and taking pro-active steps in our assessment of our risks and response and has implementing a response and recovery strategic framework. This framework focuses on three main tiers; 'Public Health', 'Our Business' and 'Our Community'

Council continues to liaise with key stakeholders local, regional and state to ensure that it is kept up to date with the latest information and that decisions are being made in the best interest of the well-being of our community.

Councils Local Emergency Management Committee is meeting to discuss local and regional issue and jointly monitoring developments.

Keep Yourself Updated

Residents are encouraged to keep abreast of the updates being provided from the relevant State Government Departments and continue to take the necessary precautions as advised by our health professionals.

HealthyWA - <https://healthywa.wa.gov.au/coronavirus>

This should be the main page to refer people to as it has information on COVID-19 clinics and current advice.

Commonwealth Department of Health - <https://www.health.gov.au/>

This contains a number of fact sheets to answer many questions including advice for employers.

State Government - <https://www.wa.gov.au/government/covid-19-coronavirus>

Information and advice for the community and businesses in Western Australia.

Coronavirus Australia App -

A free app for various updates relating to the virus. For iPhone, go to the App Store and for Android, go to the Play Store - search 'Coronavirus Australia'.

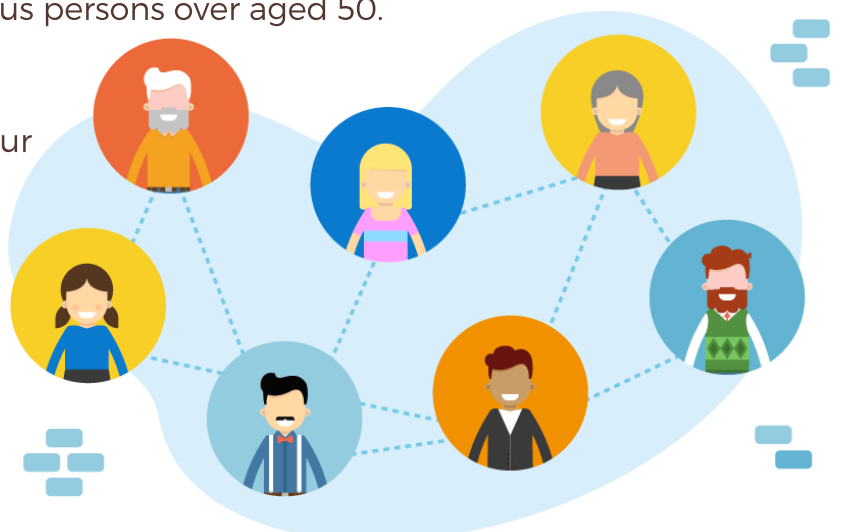


Neighbour to Neighbour Project

The situation with the Coronavirus (COVID-19) is changing daily. The Government and the Health Authorities are giving strong directions to everyone to help slow the spread of this virus. The message is clear: STAY HOME, unless for essential purposes.

On Sunday 29 March 2020, the Prime Minister's press conference included strong advice that people aged 70 and over should stay home and self-isolate for their own protection to the maximum extent practicable. these arrangements should also apply to those with chronic illness over 60 and Indigenous persons over aged 50.

To support people staying home, the Shire has launched the Neighbour to Neighbour Project, which will provide a number of services within Wyalkatchem to enable residents to stay at home. Refer to the flyer for more information.



Wheatbelt Business Network Resources

The Wheatbelt Business Network is a not-for-profit MEMBER BUSINESS

ASSOCIATION. They have summarised all available information to help Wheatbelt businesses navigate and adapt to changing times due to COVID-19.

STIMULUS PACKAGE FOR BUSINESS - FEDERAL

<https://www.business.gov.au/risk-management/emergency-management/coronavirus-information-and-support-for-business>

STIMULUS PACKAGE FOR BUSINESS - STATE

<https://www.smallbusiness.wa.gov.au/blog/coronavirus-stimulus-package-small-business>

STIMULUS PACKAGE - JOBKEEPER PAYMENT

https://www.ato.gov.au/general/gen/JobKeeper-payment/?=redirected_JobKeeper

To receive the JobKeeper Payment, employers must:

- Register an intention to apply on the ATO website;
- Provide information to the ATO (and continue this on a monthly basis) on eligible employees. This includes information on the number of eligible employees engaged as at March 1 2020, and those currently employed by the business (including those stood down or rehired);
- Ensure each eligible employee receives at least \$1500 per fortnight (before tax). Employees that were already receiving this amount from the employer will not have their income changed. Employees receiving less than \$1500, the employer will need to top up the payment to \$1500 before tax.
- Notify all eligible employees that they are receiving the JobKeeper Payment.

Employers will be eligible for the subsidy if their business has a turnover of less than \$1 billion and their turnover will be reduced by more than 30 per cent or 50 per cent relative to a comparable period a year ago (of at least a month) and they are not subject to a major bank levy.

ONLINE BUSINESS RESOURCES

Chamber of Commerce and Industry WA - COVID-19 dedicated website - [covid19.cciwa.com](https://www.covid19.cciwa.com)

- A COVID-19 Guide for Employers including answers to employee leave;
- An outline of the new COVID-19 subsidies for business;
- Screening questionnaires for staff and external parties;
- A work-from-home OHS checklist; and,
- An updated sample staff communication.

SMALL BUSINESS DEVELOPMENT CORPORATION

<https://www.smallbusiness.wa.gov.au/coronavirus>

PUBLIC HEALTH INFORMATION FOR BUSINESS

<https://www.wa.gov.au/government/coronavirus-covid-19>

We recommend that you follow public authority advice in regards to health and hygiene measures as well as social distancing rules.

Continued...

RURAL FINANCIAL COUNSELLING SERVICE - WA

<https://rfcswa.com.au/>

If you are a farmer, forester, professional fisher or you run a small business supporting these industries, you may be eligible for support from the WA teams. Phone 1800 612 004.

REGIONAL CHAMBERS OF COMMERCE AND INDUSTRY WA - IMPACT SURVEY

<https://www.surveymonkey.com/r/RCCIWACovid19Impact>

The WBN, in conjunction with the Rural Chambers of Commerce and Industry have been in contact with elected members and officials from all three tiers of Government. They are seeking real data and information on the true impacts of Coronavirus on businesses in Regional WA. They encourage businesses to fill in the survey so that all tiers of Government can identify and provide the assistance where it is most needed.

EMOTIONAL SUPPORT

Beyondblue and Ahead for Business have free online resources to help with emotional support. You can also seek help by phone;

Beyondblue: 1300 224 636

Lifeline: 13 11 14



BECOME A WBN MEMBER

Business Hotline

WBN members can contact the WBN team at any time during business hours for clear, well-informed business support and information. Their priority is the members and helping them to adapt and continue well beyond the pandemic.

Employee Relations Advice

WBN small business members can access the employee relations phone service with the Chamber of Commerce and Industry WA to answer questions on managing staff during the pandemic.

Business Tools

During this time, WBN members will receive business planning tools and resources specifically designed for rural small business.

Online Presence

WBN members receive a prominent listing in the Online Wheatbelt Business Directory, helping them to be found.



Neighbour to Neighbour Project

The Shire of Wyalkatchem is launching the Neighbour to Neighbour project, which aims to support community members at high risk of being impacted by the threats of COVID-19.

Neighbour to Neighbour encourages local residents to sign up and volunteer to help vulnerable people in their community with simple errands, including grocery shopping, dog walking, posting mail or simply checking in with a friendly call.

The project aims to connect with people who are self-isolating, people with disability or underlying health issue, aged persons and people who don't have family support locally.

Vulnerable people, in particular the aged or people with chronic health issues, are recommended to limit their interaction with the general public as a safety precaution for their own health. Even if you are not currently self-isolating, we are here to help connect you with people with a capacity to help.

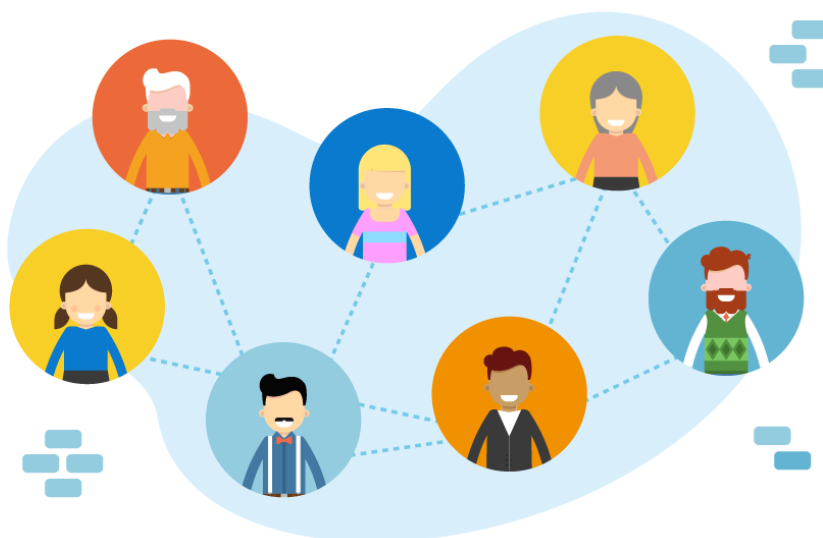
If you or anyone that you know requires support during this challenging time, please register their details with the Shire. Shire Staff will try to connect them with the most appropriate services for their situation.

Additionally, we are seeking members of the community who have an interest and capacity to assist with ensuring our vulnerable members of the community are provided with the support that they need. If you are able to volunteer, please register your details with the Shire.

Registration is simple, simply complete applicable 'neighbour to neighbour' form, contact Shire Staff to register your details or message us on Facebook.

Forms are available at the Shire's website www.wyalkatchem.wa.gov.au and can be returned by email to admin2@wyalkatchem.wa.gov.au

Forms are also available at the Shire Office (please call ahead first - (08) 9681 1166) and participating outlets around town.



Lotterywest COVID-19 Relief Fund

The State Government, through Lotterywest, announced significant changes to Lotterywest's Grants Program, to support organisations dealing with the community impacts of COVID-19.

The reprioritised grant funding of approximately \$159 million will focus on the areas where Lotterywest can support organisations that are helping people experiencing hardship.

Lotterywest will now allocate all profits previously assigned to a direct grants budget directly into the newly created fund to assist the Western Australian community to recover.

Grant support will be available immediately for eligible not-for-profit organisations and community groups. For more information please visit www.lotterywest.wa.gov.au or by calling 13 37 77.

Burning Period Reinstated

Please be advised DFES has reinstated and extended the Restricted Burning Period.

Permits are now required for all burning purposes and will be required until 30 April 2020.

Please consider the wind direction when burning, as excessive smoke over the town site could cause further health related issues.



Public Notice – Planning Approval

The Shire of Wyalkatchem has received an application to use and/or develop land for the following purpose and public comments are invited.

Property Details: Lot 57, 36 Flint Street, Wyalkatchem

Proposal: Development Application to Operate a Container Refund Point

Details of the proposal are available by contacting the Shire Office on 9681 1166.

Should any person or group wish to make comment on the development application, submissions are required in writing and received by 5pm on 24 April 2020.

Written submissions are to be addressed to the Chief Executive Officer, Shire of Wyalkatchem, submitted to ceo@wyalkatchem.wa.gov.au.

Taryn Dayman

CHIEF EXECUTIVE OFFICER



Public Notice - DAIP

Call for Submissions on the Disability Access and Inclusion Plan Review

The Shire of Wyalkatchem is seeking feedback on all aspects of its draft Disability Access and Inclusion Plan (DAIP) for 2020 - 2025. The DAIP sets out the Shire's commitment to making our community a welcoming and inclusive place for everyone to enjoy.

The aim of the DAIP is to provide a framework to improve access for all people in the community in relation to the following areas:

- Services and events,
- Buildings and facilities,
- Information,
- Customer service,
- Complaints,
- Community Engagement, and,
- Employment.

The draft DAIP is available by contacting the Shire Office by phone **96811166** or by email **general@wyalkatchem.wa.gov.au**.

Written submissions about the review of the Disability Access and Inclusion Plan may be made to the Chief Executive Officer, by Friday 17 April 2020, by email **ceo@wyalkatchem.wa.gov.au**

Why do we have a DAIP?

- It is required under the Disability Services Act 1993.
- It assists LG's to ensure people with disabilities, the elderly, young parents, parents with prams and well as people from culturally and linguistically diverse backgrounds have access and inclusion across Council controlled buildings, facilities and services.

Why is the Shire conducting public consultation?

- The Shire is keen to hear from its community and speak with those with needs to ensure they have access and inclusions across the whole Shire.

What are the key elements?

- Services and events,
- Access to buildings and facilities,
- Receiving information,
- Quality of service provided by the town,
- Opportunity to provide feedback/complaints,
- Participate in consultation processes,
- Access to employment.

How can I get involved with improving access and inclusion in the community?

- Provide written feedback of the draft DAIP
- Phone the Shire for conversation about access and inclusions.

Shire of Wyalkatchem

If you have any queries, issues or require more information on any Shire of Wyalkatchem affairs, please feel free to contact the Shire Staff or Councillors using these details:

Phone: (08) 9681 1166

Fax: (08) 9681 1003

Email: general@wyalkatchem.wa.gov.au

Address: 27 Flint Street, Wyalkatchem

Postal: PO Box 224, Wyalkatchem

Councillor Contacts

Shire President

Cr Quentin Davies

0408 346 519

cr.davies@wyalkatchem.wa.gov.au

Cr Steve Gamble

0427 815 031

cr.gamble@wyalkatchem.wa.gov.au

Cr Emma Holdsworth

0429 015 062

cr.eholdsworth@wyalkatchem.wa.gov.au

Shire Deputy President

Cr Owen Garner

0429 825 069

cr.garner@wyalkatchem.wa.gov.au

Cr Mischa Stratford

0438 464 421

cr.stratford@wyalkatchem.wa.gov.au

Cr Rachel Nightingale

0488 053 992

cr.nightingale@wyalkatchem.wa.gov.au

