

MAY 2020

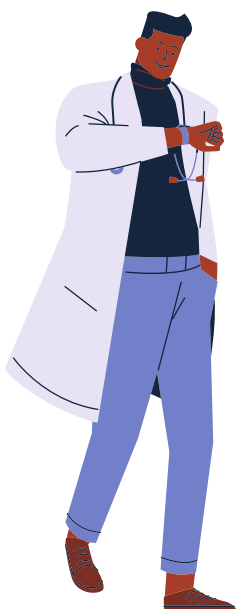
# Council Newsletter

SHIRE OF WYALKATCHEM

## COVID-19 Community Update

The following information within this newsletter is the most current and up-to-date information the Shire of Wyalkatchem has received.

Updates are coming almost hourly from the Government and we are trying to keep our locals as in the know as possible.



### IN THIS ISSUE...

- Rules Relaxing Update
- COVIDSafe App
- Community Update
- Council Facilities
- Workforce
- Services
- Meetings
- Keep Yourself Updated
- Neighbour to Neighbour
- WBN Resources
- Lotterywest Relief Fund
- Stolen AED
- Vaccinations
- CEACA Units Available
- Councillor Contacts

### Council's Vision

That Wyalkatchem is an inclusive, dynamic community where all share in a thriving economy and a sustainable, safe and valued environment

### Our Purpose

The Council of Wyalkatchem works with the community to protect and enhance the quality of life for current and future generations.

# Update Of Gathering Restrictions

As of 27 April 2020, the two person limit on non-work indoor and outdoor gatherings has been adjusted, with the limit rising to 10 people. All people present must still adhere to the 1.5m social distancing rule.

Additionally, the list of acceptable activities to do away from home has been expanded slightly. You should still practice social distancing and stay home except for:

- Shopping for what you need, such as food or other necessary supplies;
- Medical or health care needs, including compassionate requirements;
- Exercise, including outdoor personal training without shared equipment;
- Training or University study, where remote learning is unavailable;
- Childcare or school;
- Work;
- Non-contact recreational activities such as private picnics in the park, fishing, boating, hiking and camping - all in compliance with travel restrictions and the 10 person rule;
- Home opens and display village openings, with appropriate record keeping and hygiene practices in place, and compliance with the 10 person rule.

A maximum of 10 people will be allowed at weddings, funerals, outdoor personal training, home opens and display village inspections as part of these changes.

All other restrictions remain in place for now, and all public playground, skate parks and outdoor gym equipment is to remain closed.

**NOW IS NOT THE TIME TO BE COMPLACENT.** Please stay home as much as possible.

## COVIDSafe Tracing App

A new app has been developed by the Government to trace positive and potential COVID-19 cases.

Downloading the app is voluntary, but highly recommended by the Chief Medical Officer. The app's success is based on how many Australians use it.

The app works by using Bluetooth on your smart phone to log who you have been in close contact with, and will alert you if you have come into contact with anyone who tested positive for COVID-19 (if they are also using the app).

The information is stored locally on your phone and only accessible by State and Territory Health Officials. Most personal information is not required by the app, only names, phone numbers, post codes etc.

It can be found on the App Store for iPhone and on Google Play for Android.

Search for 'COVIDSafe'.



# stop the spread!



# Testing Criteria for COVID-19 Expanded

The testing criteria for COVID-19 has been expanded significantly at all COVID-19 clinics.

Now, if you present with ANY of the following, you are eligible to be tested:

- A fever of 38°C or above,
- A documented history of a fever in the last few days,
- An acute respiratory infection (e.g. shortness of breath, cough, sore throat)

If you have these symptoms, please get tested. Please call ahead at the Hospital or Medical Centre before arriving to allow health professionals to follow procedure and protocol without being exposed.



as at  
**28/04/2020**

## Council Facilities

As of 30 March 2020, Council has closed the following facilities:

- Shire Office
- Town and Korrelocking Halls and ablutions
- Playgrounds
- Recreation Centre and ablutions
- Terminal Building
- Swimming Pool
- Drinking fountains
- Barbecues
- Public Toilets



The Shire Office is closed to public access unless an appointment has been made. Please contact the Shire Office if you wish to make an appointment by phone [96811166](tel:96811166) or by email [general@wyalkatchem.wa.gov.au](mailto:general@wyalkatchem.wa.gov.au). Do not come to the office if you don't have an appointment, are unwell, or showing any symptoms of being unwell. All approved visitors will be required to adhere to social distancing and maintain good hygiene measures. Many Shire enquiries and payments can be made by phone or online, and we ask that you use these options wherever possible.

# help us, help you



# Workforce

The Shire has taken preventative measures within its workforce; including staggered workforce and working from home. Your patience during this time, as we work through implementing our processes, would be greatly appreciated.

Where possible, outside staff are continuing with planned works and maintenance. Staff are practicing social distancing and we would ask that you respect these practices and refrain from approaching them directly.

This is all essential services, and all that we ask is that you avoid interaction with our staff, and help stop the spread of COVID-19.



# Services

Waste collection services are currently operating as normal. Avon Waste has continuity plans in place to limit disruptions to these services.

The Shire of Wyalkatchem is currently developing our own continuity plans, to ensure that we can continue to provide critical services to our residents.

# Meetings

Councillors are meeting regularly via teleconference and taking pro-active steps in our assessment of our risks and response and has implementing a response and recovery strategic framework. This framework focuses on three main tiers; 'Public Health', 'Our Business' and 'Our Community'

Council continues to liaise with key stakeholders local, regional and state to ensure that it is kept up to date with the latest information and that decisions are being made in the best interest of the well-being of our community.

Councils Local Emergency Management Committee is meeting to discuss local and regional issue and jointly monitoring developments.



# Keep Yourself Updated

Residents are encouraged to keep abreast of the updates being provided from the relevant State Government Departments and continue to take the necessary precautions as advised by our health professionals.

HealthyWA - <https://healthywa.wa.gov.au/coronavirus>

This should be the main page to refer people to as it has information on COVID-19 clinics and current advice.

Commonwealth Department of Health - <https://www.health.gov.au/>

This contains a number of fact sheets to answer many questions including advice for employers.

State Government - <https://www.wa.gov.au/government/covid-19-coronavirus>

Information and advice for the community and businesses in Western Australia.

Coronavirus Australia App -

A free app for various updates relating to the virus. For iPhone, go to the App Store and for Android, go to the Play Store - search 'Coronavirus Australia'.

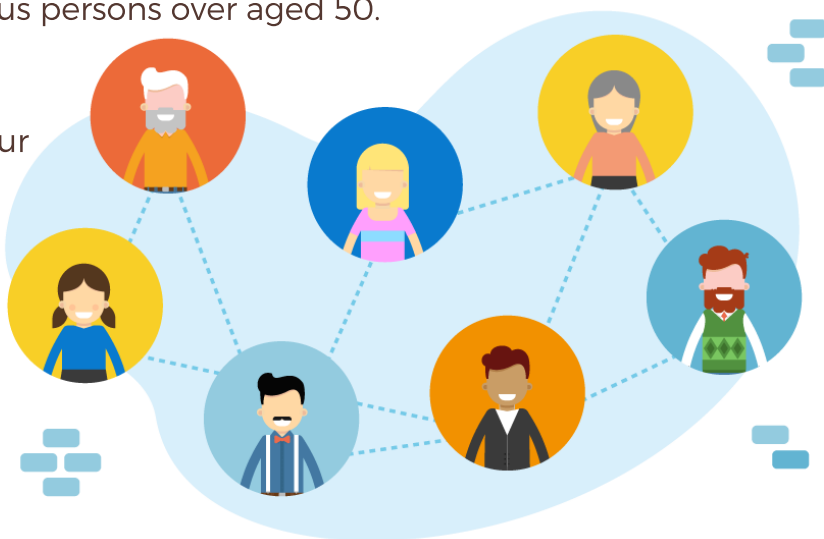


## Neighbour to Neighbour Project

**The situation with the Coronavirus (COVID-19) is changing daily. The Government and the Health Authorities are giving strong directions to everyone to help slow the spread of this virus. The message is clear: STAY HOME, unless for essential purposes.**

On Sunday 29 March 2020, the Prime Minister's press conference included strong advice that people aged 70 and over should stay home and self-isolate for their own protection to the maximum extent practicable. these arrangements should also apply to those with chronic illness over 60 and Indigenous persons over aged 50.

To support people staying home, the Shire has launched the Neighbour to Neighbour Project, which will provide a number of services within Wyalkatchem to enable residents to stay at home. Refer to the flyer for more information.



# Wheatbelt Business Network Resources

**The Wheatbelt Business Network is a not-for-profit MEMBER BUSINESS**

**ASSOCIATION.** They have summarised all available information to help Wheatbelt businesses navigate and adapt to changing times due to COVID-19.

## **STIMULUS PACKAGE FOR BUSINESS - FEDERAL**

<https://www.business.gov.au/risk-management/emergency-management/coronavirus-information-and-support-for-business>

## **STIMULUS PACKAGE FOR BUSINESS - STATE**

<https://www.smallbusiness.wa.gov.au/blog/coronavirus-stimulus-package-small-business>

## **STIMULUS PACKAGE - JOBKEEPER PAYMENT**

[https://www.ato.gov.au/general/gen/JobKeeper-payment/?=redirected\\_JobKeeper](https://www.ato.gov.au/general/gen/JobKeeper-payment/?=redirected_JobKeeper)

To receive the JobKeeper Payment, employers must:

- Register an intention to apply on the ATO website;
- Provide information to the ATO (and continue this on a monthly basis) on eligible employees. This includes information on the number of eligible employees engaged as at March 1 2020, and those currently employed by the business (including those stood down or rehired);
- Ensure each eligible employee receives at least \$1500 per fortnight (before tax). Employees that were already receiving this amount from the employer will not have their income changed. Employees receiving less than \$1500, the employer will need to top up the payment to \$1500 before tax.
- Notify all eligible employees that they are receiving the JobKeeper Payment.

Employers will be eligible for the subsidy if their business has a turnover of less than \$1 billion and their turnover will be reduced by more than 30 per cent or 50 per cent relative to a comparable period a year ago (of at least a month) and they are not subject to a major bank levy.

## **ONLINE BUSINESS RESOURCES**

Chamber of Commerce and Industry WA - COVID-19 dedicated website - [covid19.cciwa.com](https://covid19.cciwa.com)

- A COVID-19 Guide for Employers including answers to employee leave;
- An outline of the new COVID-19 subsidies for business;
- Screening questionnaires for staff and external parties;
- A work-from-home OHS checklist; and,
- An updated sample staff communication.

## **SMALL BUSINESS DEVELOPMENT CORPORATION**

<https://www.smallbusiness.wa.gov.au/coronavirus>

## **PUBLIC HEALTH INFORMATION FOR BUSINESS**

<https://www.wa.gov.au/government/coronavirus-covid-19>

We recommend that you follow public authority advice in regards to health and hygiene measures as well as social distancing rules.



**Continued...**

### **RURAL FINANCIAL COUNSELLING SERVICE - WA**

<https://rfcswa.com.au/>

If you are a farmer, forester, professional fisher or you run a small business supporting these industries, you may be eligible for support from the WA teams. Phone 1800 612 004.

### **REGIONAL CHAMBERS OF COMMERCE AND INDUSTRY WA - IMPACT SURVEY**

<https://www.surveymonkey.com/r/RCCIWACovid19Impact>

The WBN, in conjunction with the Rural Chambers of Commerce and Industry have been in contact with elected members and officials from all three tiers of Government. They are seeking real data and information on the true impacts of Coronavirus on businesses in Regional WA. They encourage businesses to fill in the survey so that all tiers of Government can identify and provide the assistance where it is most needed.

### **EMOTIONAL SUPPORT**

Beyondblue and Ahead for Business have free online resources to help with emotional support. You can also seek help by phone;

**Beyondblue: 1300 224 636**

**Lifeline: 13 11 14**



### **BECOME A WBN MEMBER**

#### **Business Hotline**

WBN members can contact the WBN team at any time during business hours for clear, well-informed business support and information. Their priority is the members and helping them to adapt and continue well beyond the pandemic.

#### **Employee Relations Advice**

WBN small business members can access the employee relations phone service with the Chamber of Commerce and Industry WA to answer questions on managing staff during the pandemic.

#### **Business Tools**

During this time, WBN members will receive business planning tools and resources specifically designed for rural small business.

#### **Online Presence**

WBN members receive a prominent listing in the Online Wheatbelt Business Directory, helping them to be found.



# Lotterywest COVID-19 Relief Fund

**The State Government, through Lotterywest, announced significant changes to Lotterywest's Grants Program, to support organisations dealing with the community impacts of COVID-19.**

The reprioritised grant funding of approximately \$159 million will focus on the areas where Lotterywest can support organisations that are helping people experiencing hardship.

Lotterywest will now allocate all profits previously assigned to a direct grants budget directly into the newly created fund to assist the Western Australian community to recover.

Grant support will be available immediately for eligible not-for-profit organisations and community groups. For more information please visit [www.lotterywest.wa.gov.au](http://www.lotterywest.wa.gov.au) or by calling 13 37 77.

## Stolen AED

The Shire of Wyalkatchem is extremely disappointed to find the AED from the Recreation Centre has been stolen.

Shire Staff discovered the defibrillator case outside of the Rec Centre building with the actual machine missing, and a police report has since been submitted.

If anyone has any information on the whereabouts of the missing defibrillator, please contact the Shire immediately on **9681 1166**.

## NEWTRAVEL and Pioneer's Pathway

There are two groups in the Wheatbelt made up from members from various Shires, who actively promote and encourage visitors to the region.

NEWTRAVEL and the Pioneer Pathway groups are restarting media advertisements encouraging people to think about planning a trip to the Wheatbelt, once the COVID-19 restrictions are eased/removed, and need your help.

We require any photos in Wyalkatchem that you feel would catch a persons eye and spark interest in visiting - anything scenic, farming, wildlife etc. The chosen photos will be used to promote Wyalkatchem on the groups websites and as promotional material in brochures and magazines. Photo credit may be given.

Please send any photos via email to [admin2@wyalkatchem.wa.gov.au](mailto:admin2@wyalkatchem.wa.gov.au) or on the Shire of Wyalkatchem Facebook page: @shireofwyalkatchem.





# Flu Vaccinations

The Wyalkatchem Medical Centre is offering **FREE** Government funded influenza vaccines for **children 10 and under**, those **over 65 years** old, and **all aboriginals**.

For those who do not fit this category, and who wish to have the influenza vaccine, please ring Raj at the Happy Pill Pharmacy on **9681 1547**.

The Medical Centre is open as normal, however, are making changes to the way they practice to ensure the safety of all patients and staff.

For the time being, you can organise face to face, phone and video calls. The staff will advise you of the best method when making your appointment, depending on your needs.

The Wyalkatchem Medical Centre can be contacted by phone on **9681 1140**, or by email at **wyliemc@outlook.com**







# CEACA

Supporting Age Friendly Communities

## CEACA Units Available Now!



### Introducing new CEACA Referral Program!

Refer a friend, family member or acquaintance to our units and if the person they referred is successful, the referrer will be paid a one-off sum of **\$250!**

### Available units

#### Central East Aged Care Alliance Inc (CEACA) aims to provide affordable housing in the wheatbelt region.

The following CEACA sites are now fully occupied: Koorda, Westonia, Mukinbudin, Nungarin, Bencubbin.

Two bedroom units are available in the following Shires and we invite expressions of interest to be sent to us at [info@ceaca.org.au](mailto:info@ceaca.org.au): Merredin, Kellerberrin, Beacon, Yilgarn, Wyalkatchem, Bruce Rock, and Trayning.

All units come with a split system air-conditioner in the main living area and ceiling fans in the bedrooms.

The interior of the units are furnished with good quality carpet and blinds.

The tenants are all settling in well and are enjoying their new home. If you have someone in mind who would be interested in renting one of our units, but need to know more or are unsure of whether they would be eligible, please let us know.



### Tenant feedback

**The following are some comments from some of our happy tenants!**

#### Lorraine & Laurie

Really like our new unit, very spacious and roomy. Love how we have a small community of people here who are helpful and neighbourly but also respectful of each other's privacy.

#### Graeme & Judith

We love our unit here in Kellerberrin. It is rather spacious and has heaps of storage. Living in a village community makes you feel quite safe everyone looks out for each other. And we are within walking distance of the shops. That gives us some exercise.

#### Rose & Terry

Life at the Kellerberrin units is great, everyone is friendly and we have get togethers for special occasions. New Year's Eve the tenants got together, we took our tables and chairs out under the tree and it was a great night for all. I would fully recommend living at these units.

**Get in touch**  
for any inquiries

(08) 9441 4815

📞 0414 136 687

✉ [info@ceaca.org.au](mailto:info@ceaca.org.au)

[www.ceaca.org.au](http://www.ceaca.org.au)





# Shire of Wyalkatchem

If you have any queries, issues or require more information on any Shire of Wyalkatchem affairs, please feel free to contact the Shire Staff or Councillors using these details:

**Phone: (08) 9681 1166**

**Fax: (08) 9681 1003**

**Email: [general@wyalkatchem.wa.gov.au](mailto:general@wyalkatchem.wa.gov.au)**

**Address: 27 Flint Street, Wyalkatchem**

**Postal: PO Box 224, Wyalkatchem**

## Councillor Contacts

### Shire President

**Cr Quentin Davies**

0408 346 519

[cr.davies@wyalkatchem.wa.gov.au](mailto:cr.davies@wyalkatchem.wa.gov.au)

**Cr Steve Gamble**

0427 815 031

[cr.gamble@wyalkatchem.wa.gov.au](mailto:cr.gamble@wyalkatchem.wa.gov.au)

**Cr Emma Holdsworth**

0429 015 062

[cr.eholdsworth@wyalkatchem.wa.gov.au](mailto:cr.eholdsworth@wyalkatchem.wa.gov.au)

### Shire Deputy President

**Cr Owen Garner**

0429 825 069

[cr.garner@wyalkatchem.wa.gov.au](mailto:cr.garner@wyalkatchem.wa.gov.au)

**Cr Mischa Stratford**

0438 464 421

[cr.stratford@wyalkatchem.wa.gov.au](mailto:cr.stratford@wyalkatchem.wa.gov.au)

**Cr Rachel Nightingale**

0488 053 992

[cr.nightingale@wyalkatchem.wa.gov.au](mailto:cr.nightingale@wyalkatchem.wa.gov.au)

